

UNFORGETTABLE –  
WITH ALL THE SENSES.

CRUISES  
JUNE 2025 – MARCH 2026



  
HAPAG <sup>18</sup>/<sub>91</sub> LLOYD  
CRUISES

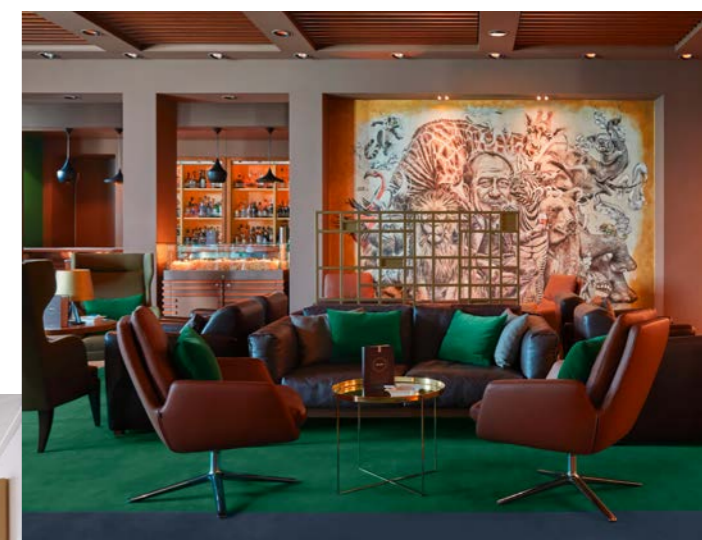
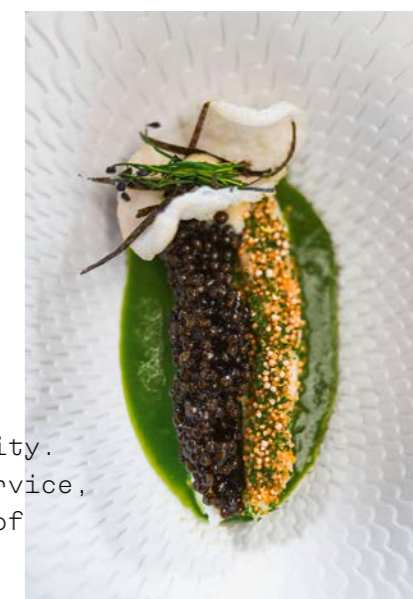


EXPERIENCE BLISSFUL MOMENTS  
WITH US THAT SHIMMER IN  
MULTIFACETED SHADES . . .

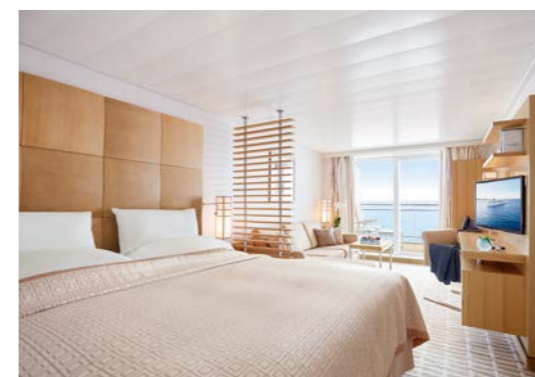


On a cruise with Hapag-Lloyd Cruises, you experience every moment with particular intensity. Thanks to first-rate facilities, high-class service, unique destinations and an incomparable range of wellness, gastronomy and entertainment offers, every second on board becomes a lasting memory. *No matter whether you discover a new kind of luxury on the EUROPA 2 or explore the wonders of the world on one of our expedition ships, your senses will be delighted.*

On board our ships you can expect unforgettable gourmet experiences.



Whether in the restaurant, the lounge or your suite, Hapag-Lloyd Cruises stands for perfection in every detail.





From exciting taste experiences to deeply relaxing yoga, our programme offers highlights for all our guests.

... WITH AN  
EXCEPTIONAL TASTE  
AND RELAXING AROMAS ...



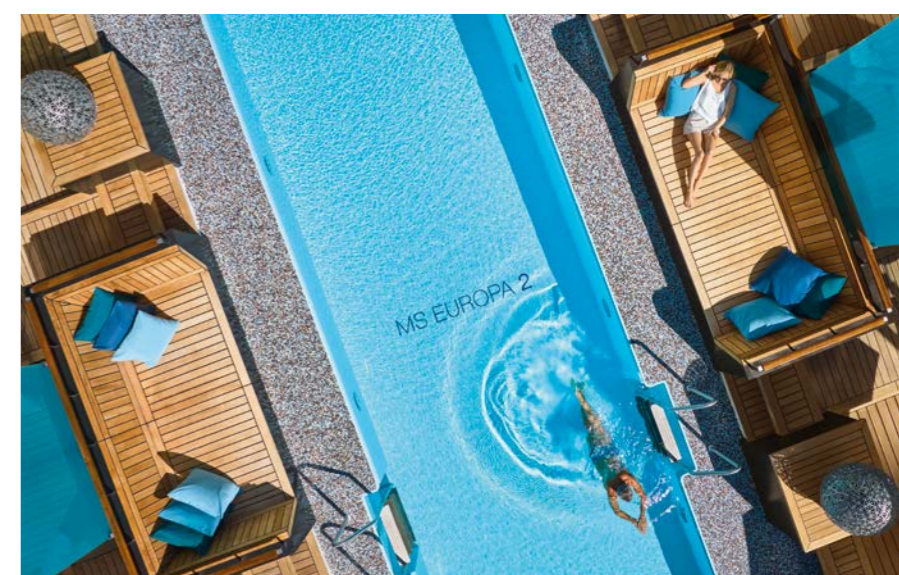
Profound relaxation in our luxurious spa? Unparalleled indulgence in one of our sophisticated restaurants? Breathtaking entertainment on stage or on the movie screen?



In our unique wellness areas, you will find relaxation for body and soul.

On board our ships, you have the opportunity to put together your individual cruise from countless exceptional moments, tailored to your personal preferences.

Thanks to a guest to crew ratio of almost 1:1, there is only one thing that always remains the same: our perfect service. No wonder that our cruise fleet was named the best in the world by Insight Guides 2025.



Our extensive pool area is always available for tranquil hours spent in the sun.



Together with us, experience places that have written great history – for instance, from Piraeus (Athens) to Naples. Page 19.



Set foot in places where hardly anyone has ever been before – for instance, on expeditions to the Antarctic. Pages 16/17.



Discover Central America from a completely new perspective – for instance, from Panama City to Colon. Page 13.

... AND WHERE EVERY VIEW



Join us on an expedition to paradise – for instance, from Tahiti to Valparaiso. Page 27.



REVEALS INSIGHTS INTO YOUR OWN SOUL.



The destinations we sail to with our ships will be just as unforgettable as your experience on board. Each of our unique routes is meticulously planned by our experts based on their many years of experience. Thanks to the shallow draught of our fleet, we can also reach places that are often considered inaccessible, giving you the opportunity to experience them up close, either individually or as part of fascinating tours.

Europe, Asia, the Caribbean, the Pacific and even the Antarctic – with us, you'll discover the most beautiful places in the world in more luxury and relaxation than ever before.





## UNKNOWN JAPAN (WEST AND SOUTH COAST).

Premiere route between vibrant urban life and stunning nature. From Hokkaido to Japan's Inland Sea, the HANSEATIC inspiration reveals the highlights of the island kingdom for you: white beaches, lush green forests and lofty mountains will captivate you just as much as magnificent shrines, majestic temples and traditional tea houses. The South Korean city of Busan is also rich in culture and full of life.



**FROM OTARU TO YOKOHAMA**  
09 Jun – 25 Jun 2025  
16 days, HANSEATIC inspiration, cruise INS2530

★ Get the limited SILVER fare now

from	€	10,990	per person
	USD	12,089	per person
	GBP	9,451	per person

cruise only (double occupancy, SILVER fare)



Scan the QR Code for further information.

## ALASKA (INSIDE PASSAGE).

Alaska's Inside Passage will show you its most beautiful facets twice in July and August 2025. Lined with mighty mountains, dense forests and ice-blue glaciers, the journey is the destination as you get a first-hand experience of Alaska's wilderness: in the home of bears, bald eagles and whales, the chances of spotting wildlife are good. Let yourself be guided by a great sense of freedom in the footsteps of the early gold prospectors.



**FROM SEWARD TO VANCOUVER (SOUTH ROUTE)**  
15 Jul – 28 Jul 2025  
13 days, HANSEATIC inspiration, cruise INS2532

**FROM VANCOUVER TO SEWARD (NORTH ROUTE)**  
28 Jul – 10 Aug 2025  
13 days, HANSEATIC inspiration, cruise INS2533

★ Get the limited SILVER fare now

from	€	8,990	per person
	USD	9,889	per person
	GBP	7,731	per person

cruise only (double occupancy, SILVER fare)

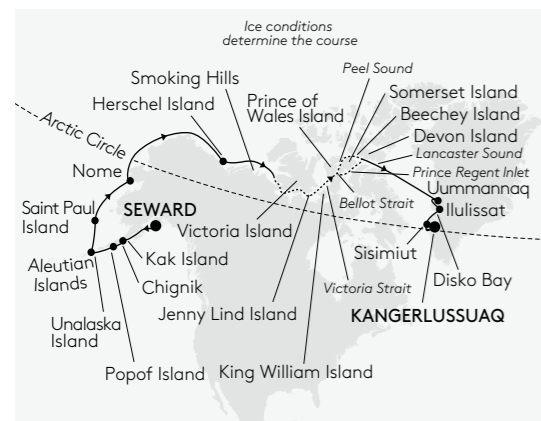


Scan the QR Code for further information.



## EXPEDITION NORTHWEST PASSAGE (WEST-EAST ROUTE).

Bizarre ice formations, fascinating wildlife and nautical challenges: the Northwest Passage is one of the most famous sea routes in the world, combining captivating history with thrilling natural impressions. Discover dramatic landscapes on Zodiac rides and hikes. Experience the legend of a passage that fewer than 100 ships have mastered since the first complete navigation in 1906. Are you ready to add another masterpiece to this route?



### FROM SEWARD TO KANGERLUSSUAQ

10 Aug - 08 Sep 2025  
29 days, HANSEATIC inspiration, cruise INS2511

from € 25,370 per person  
USD 27,910 per person  
GBP 21,820 per person  
cruise only incl. charter flight  
(double occupancy, PLATINUM fare)



Scan the QR Code  
for further information.

## EXPEDITION GREENLAND, NEWFOUND- LAND AND ST LAWRENCE RIVER.

Greenland, the world's largest island, is a multifaceted treasure trove for explorers. Imposing icebergs drifting through Disko Bay are as breathtaking as the contrasts between the blooming tundra and the mighty mountain ranges. Inuit settlements such as Sisimiut on the west coast set the cultural tone. On the St Lawrence River, the HANSEATIC inspiration will scale seven locks with a height difference of up to 15 m (49 ft). You can watch the thrilling manoeuvres from the spacious decks during the day.



### FROM KANGERLUSSUAQ TO TORONTO

08 Sep - 26 Sep 2025  
18 days, HANSEATIC inspiration, cruise INS2512

★ Get the limited  
SILVER fare now

from € 12,290 per person  
USD 13,520 per person  
GBP 10,570 per person  
cruise only incl. charter flight  
(double occupancy, SILVER fare)



Scan the QR Code  
for further information.



## NEW YORK, BAHAMAS AND PANAMA CANAL: ADVENTURER'S WORLDS.

From vibrant city life to exotic masterpieces of tropical nature: a route could hardly be more multifaceted. First, the streets of New York will tell you about the rise, fall and rebirth of the Hudson metropolis. In the Bahamas, Nassau combines rich history, an active art scene and Caribbean magic – while the daytime passage through the Panama Canal is a unique experience as you glide past lush rainforest and mangroves. The crowning glory of your trio of discoveries on board the HANSEATIC inspiration.



**FROM HALIFAX TO PANAMA CITY**  
 25 Oct – 08 Nov 2025  
 14 days, HANSEATIC inspiration, cruise INS2515

from	€	8,490	per person
	USD	9,339	per person
	GBP	7,301	per person

cruise only (double occupancy, GOLD fare)



Scan the QR Code for further information.

## EXPEDITION CENTRAL AMERICA WITH PANAMA CANAL.

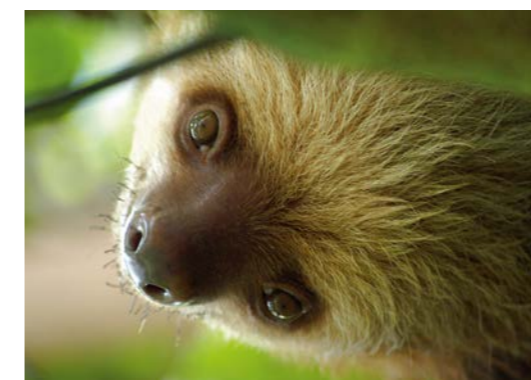
Central America – intensive insights. On this cruise, you will experience both man-made and natural masterpieces: exotic animal kingdoms, volcanic worlds and idyllic islands inspire with sheer breathtaking diversity. Pure adventure awaits you on the daytime passage through the Panama Canal: while the HANSEATIC inspiration overcomes the 26 m (85 ft) difference in height between the oceans thanks to the lock systems, experts provide knowledgeable commentary on the passage.



**FROM PANAMA CITY TO COLON**  
 08 Nov – 19 Nov 2025  
 11 days, HANSEATIC inspiration, cruise INS2516

from	€	6,990	per person
	USD	7,689	per person
	GBP	6,011	per person

cruise only (double occupancy, GOLD fare)



Scan the QR Code for further information.



## EXPEDITION SOUTH AMERICA WITH PANAMA CANAL.

Panama, Colombia, Ecuador, Peru and Chile: the diversity of South America's Pacific coast is revealed in all its splendour on this cruise with the HANSEATIC inspiration. Your adventure begins with a daytime passage through the Panama Canal before nature and culture cast their spell over you. From rainforest to desert, from the traditions of the Indigenous people to the thrilling history of privateers – on this five-country expedition, you will write your own personal history of discovery.



**FROM COLON TO VALPARAISO**  
 19 Nov – 05 Dec 2025  
 16 days, HANSEATIC inspiration, cruise INS2517

from	€	10,190	per person
	USD	11,209	per person
	GBP	8,763	per person

cruise only (double occupancy, GOLD fare)



Scan the QR Code for further information.

## EXPEDITION CHILEAN FJORDS.

With the HANSEATIC inspiration, you will set sail to discover 1,000 new contrasts of an entire country: Chile's natural treasures along the Pacific coast invite you to explore and marvel. The inspiring natural wonders at the far end of the world feature majestic glaciers and powerful volcanoes, picturesque fjords (inside passage) and idyllic islands – as well as diverse flora and fauna, which you will experience up close from the ship and by Zodiac.



**FROM VALPARAISO TO USHUAIA**  
 05 Dec – 20 Dec 2025  
 15 days, HANSEATIC inspiration, cruise INS2518

from	€	10,590	per person
	USD	11,649	per person
	GBP	9,107	per person

cruise only incl. charter flight (double occupancy, GOLD fare)



Scan the QR Code for further information.



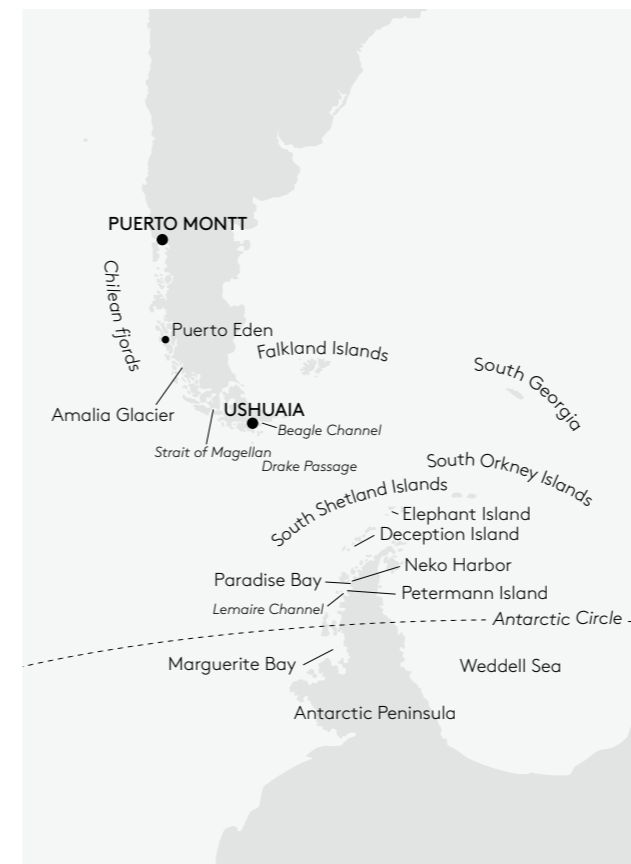
# EXPEDITIONS FOR ETERNITY.

Glittering icebergs, mighty glacier panoramas, seabird colonies, seals – and, of course, penguins: welcome to the Antarctic! Immerse yourself in thrilling experiences at the far end of the earth, accompanied by the crunching of pack ice and breathtaking natural spectacles. Here the summer stretches from November to March and is the best time to visit. Where other ships must stop and turn around, the adventure is only just beginning for you: thanks to the highest ice class for passenger ships (PC 6), the HANSEATIC inspiration navigates a flexible course through the polar world of ice, offering spectacular views that you will never forget. Numerous Zodiac rides, landings and hikes provide an active sense exploration – and, on board, you can deepen your discoveries with fascinating lectures, precaps and recaps held by our experts.



## WHAT MAKES THIS CRUISE SO SPECIAL

- INS2601: Hapag-Lloyd Cruises has unparalleled experience exploring the Antarctic Circle. Thick ice fields, blue-and-white glaciers and icebergs – how far south will the ship advance?
- INS2602: this expedition combines the wonders of rock and ice. A combination of cruising in Chile's rugged fjords and adventures in the most beautiful regions of the Antarctic.



## 2x EXPEDITION ANTARCTICA.

### FROM USHUAIA TO USHUAIA

09 Jan – 29 Jan 2026

20 days, HANSEATIC inspiration, cruise INS2601

from	€ 19,990 per person
	USD 21,989 per person
	GBP 17,191 per person

cruise only incl. charter flights  
(double occupancy, PLATINUM fare)

### FROM USHUAIA TO PUERTO MONTT

29 Jan – 20 Feb 2026

22 days, HANSEATIC inspiration, cruise INS2602

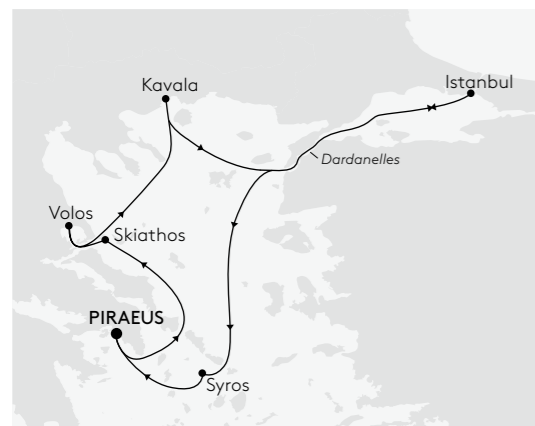
from	€ 18,490 per person
	USD 20,339 per person
	GBP 15,901 per person

cruise only incl. charter flight  
(double occupancy, GOLD fare)  
incl. early booking discount until 29 Jan 2025



## GREEK CHARM AND TRENDY ISTANBUL.

Embark on a multifaceted cruise along the Greek coast towards the Bosphorus. Landscapes with hilly islands, small coastal cities and fantastic beaches invite you to explore to your heart's content. Ancient Istanbul with its sultans' palaces, lively bazaars and cultural treasures shows itself from its most magnificent sides while the still unknown Cycladic island of Syros boasts pastel-coloured houses and neoclassical villas.



**FROM PIRAEUS (ATHENS)  
TO PIRAEUS (ATHENS)**  
13 Sep - 22 Sep 2025  
9 days, MS EUROPA 2, cruise EUX2520

from	€	5,501 per person
	USD	6,052 per person
	GBP	4,731 per person

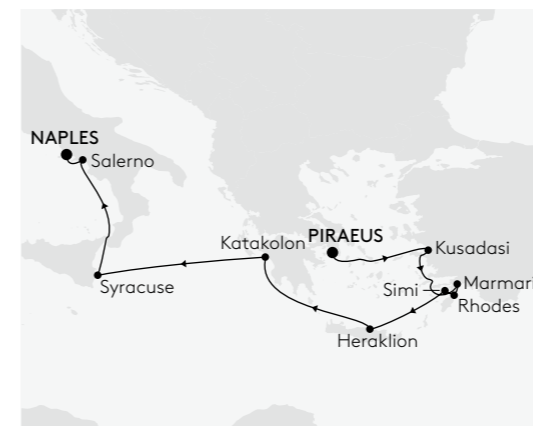
cruise only (double occupancy, GOLD fare)  
incl. early booking discount until 15 Feb 2025



Scan the QR Code for further information.

## ANCIENT WONDERS AND MEDITERRANEAN BEAUTIES.

Set off on a voyage of discovery to places that have written great history. Let yourself be enchanted by one of the most beautiful regions in the world, featuring ancient architecture and incredible landscapes. Wonderful experiences await you against a backdrop of mountains and bays. In Marmaris, stroll past luxurious yachts, in Heraklion savour a traditional frappe and Syracuse welcomes you with its beautiful cathedral.



**FROM PIRAEUS (ATHENS) TO NAPLES**  
30 Sep - 11 Oct 2025  
11 days, MS EUROPA 2, cruise EUX2522

from	€	6,690 per person
	USD	7,359 per person
	GBP	5,753 per person

cruise only (double occupancy, GOLD fare)



Scan the QR Code for further information.



## PERFECT PORTUGAL.

Take in the most delightful facets of Portugal: from impressive Lisbon, sail along the fascinating landscape of the Algarve with the EUROPA 2. Immerse yourself in the diverse flora on the flower island of Madeira in the midst of the Atlantic. The Azores islands of Sao Miguel and Terceira offer stunning views with their imposing northern coastlines. You can sweeten your experiences with a glass of wine in the beautiful coastal city of Porto (Leixoes).



**FROM LISBON TO LISBON**  
 22 Oct - 02 Nov 2025  
 11 days, MS EUROPA 2, cruise EUX2524

★ Get the limited SILVER fare now

from	€	5,990	per person
	USD	6,589	per person
	GBP	5,151	per person

cruise only (double occupancy, SILVER fare)



Scan the QR Code for further information.

## FROM LISBON TO THE TREASURES OF THE ATLANTIC.

This route across the Atlantic Ocean on board the EUROPA 2 offers unique impressions from Portugal to the Canary Islands via Africa. Discover the Portuguese metropolis of Lisbon before majestic Agadir welcomes you in the foothills of the Anti-Atlas Mountains. Then the diverse Canary Islands await you - six volcanic islands that make your cruise both special and rich in contrasts.



**FROM LISBON TO TENERIFE**  
 02 Nov - 13 Nov 2025  
 11 days, MS EUROPA 2, cruise EUX2525

★ Get the limited SILVER fare now

from	€	5,990	per person
	USD	6,589	per person
	GBP	5,151	per person

cruise only (double occupancy, SILVER fare)



Scan the QR Code for further information.



## FROM PICTURESQUE BEACHES TO THE BIG APPLE.

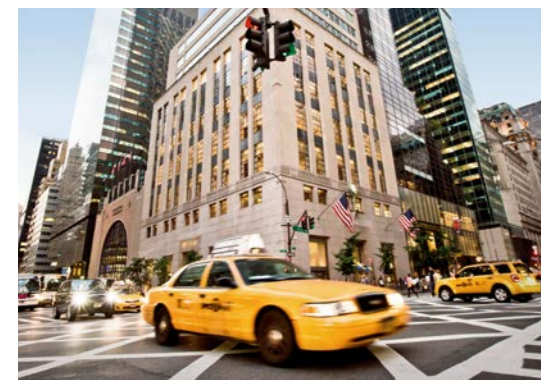
Look forward to an exclusive cruise through the heavenly Caribbean with the EUROPA 2. On Bonaire, you will experience an unmatched wildlife with pink flamingos, hummingbirds and parrots, and Mayreau invites you to linger on its snow-white beaches with crystal-clear water. The idyllic island of Saint-Barthelemy has been a favourite retreat of famous personalities for decades. Perhaps you will discover why before your cruise comes to a spectacular end in New York.



**FROM CURACAO TO NEW YORK**  
 28 Nov – 10 Dec 2025  
 12 days, MS EUROPA 2, cruise EUX2527

from	€	8,590	per person
	USD	9,449	per person
	GBP	7,387	per person

cruise only (double occupancy, GOLD fare)



Scan the QR Code for further information.

## GLITTERING MAGIC OF NEW YORK.

Christmas shopping in the United States is the ultimate highlight in the run-up to Christmas. Use the days on board the EUROPA 2 to relax and to admire the festively decorated cities. Apart from gathering exciting travel impressions, you are sure to find the perfect gifts for your loved ones at home – either in the arts and crafts shops in the Royal Naval Dockyard, the modern malls of Boston or in New York, the glistening city of superlatives.



**FROM NEW YORK TO NEW YORK**  
 10 Dec – 20 Dec 2025  
 10 days, MS EUROPA 2, cruise EUX2528

from	€	5,990	per person
	USD	6,589	per person
	GBP	5,151	per person

cruise only (double occupancy, GOLD fare)



Scan the QR Code for further information.



## THE FESTIVE SEASON AT ITS BEST.

On this exceptional cruise, you will celebrate an unforgettable Christmas and a spectacular New Year's Eve on board the EUROPA 2 – dream destinations included. Be it the southern flair of Charleston or the vibrant atmosphere of Miami. Be it the magnificent White Bay Beach on Jost Van Dyke or the colourful underwater world off Curacao. Between New York and Panama, an incomparable variety of discoveries as well as opportunities to relax await you.



**FROM NEW YORK TO COLON**  
 20 Dec 2025 – 08 Jan 2026  
 19 days, MS EUROPA 2, cruise EUX2600  
 from € 15,790 per person  
 USD 17,369 per person  
 GBP 13,579 per person  
 cruise only (double occupancy, PLATINUM fare)



Scan the QR Code for further information.



## THE TREASURES OF BYGONE CULTURES.

Join the EUROPA 2 as the ship heads for the diverse west coast of Central America and the USA. The passage through the Panama Canal and the breathtaking nature in the land of the Maya are just some of the many highlights. Explore Acapulco, Mexico's most popular ocean resort, the colourful coastal city of Zihuatanejo or San Diego, California's second largest city. A wealth of cultural treasures lies between the rainforests and sandy beaches.



**FROM COLON TO LOS ANGELES**  
 08 Jan – 25 Jan 2026  
 17 days, MS EUROPA 2, cruise EUX2601  
 from € 12,730 per person  
 USD 14,003 per person  
 GBP 10,948 per person  
 cruise only (double occupancy, PLATINUM fare)



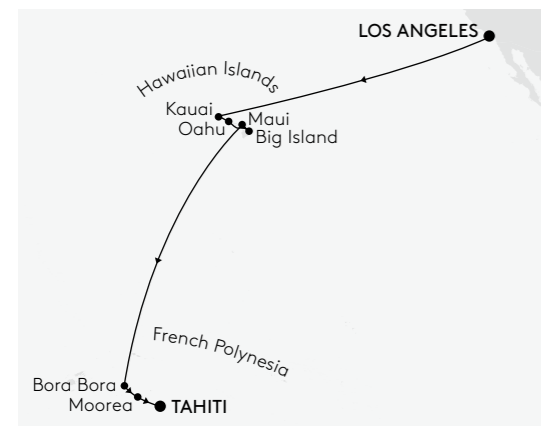
Scan the QR Code for further information.





## TRUE DREAM DESTINATIONS: HAWAII AND THE SOUTH SEAS.

The diversity of the Hawaiian Islands and the exotic nature of the South Seas form the perfect backdrop for a wonderful route through the Pacific. Enjoy six relaxing days at sea and the casual luxury on board the EUROPA 2 before reaching the first majestic archipelago. The “garden island” of Kauai and the volcanic paradise of Big Island will inspire you just as much as Bora Bora and Moorea, two of the most beautiful destinations in the South Pacific.



**FROM LOS ANGELES TO TAHITI**  
 25 Jan – 14 Feb 2026  
 20 days, MS EUROPA 2, cruise EUX2602

from	€	13,390	per person
	USD	14,729	per person
	GBP	11,515	per person

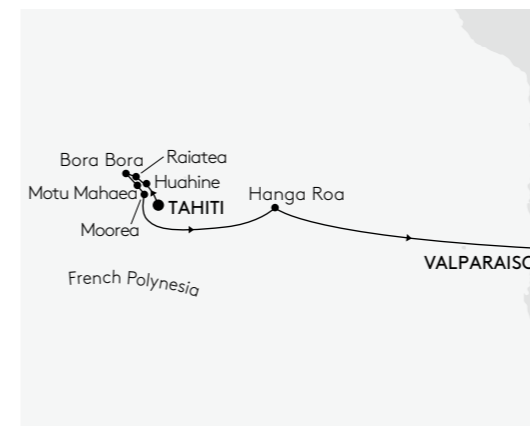
cruise only (double occupancy, PLATINUM fare)



Scan the QR Code  
for further information.

## DESTINATION PARADISE.

Sail to breathtaking islands in the South Pacific with the EUROPA 2. Exotic nature, coral reefs, white beaches and scenic coastal landscapes await you, including an ideal combination of relaxation and adventure. Admire Papeete, the picturesque capital of Tahiti, enjoy the sandy beaches and crystal-clear water of Motu Mahaea and gain intriguing insights into myths and folklore on the legendary Easter Island.



**FROM TAHITI TO VALPARAISO**  
 14 Feb – 06 Mar 2026  
 20 days, MS EUROPA 2, cruise EUX2603

from	€	13,790	per person
	USD	15,169	per person
	GBP	11,859	per person

cruise only (double occupancy, PLATINUM fare)  
 incl. early booking discount until 14 Feb 2025



Scan the QR Code  
for further information.

# PERFECT FOR YOUR TRAVEL PLANS – OUR THREE FARES.

We offer up to three fares, each with different advantages: the PLATINUM fare is always available and offers the free choice of suite/cabin and deck. Our GOLD fare has a limited availability. In this case Hapag-Lloyd Cruises chooses your suite/cabin and deck. For selected cruises we offer the SILVER fare with attractive special conditions.

	PLATINUM Can be booked at any time	GOLD Limited	SILVER Only subject to availability
Services			
Suite/cabin and deck	Free choice of suite/cabin and deck	Hapag-Lloyd Cruises chooses suite/cabin and deck at the beginning of the cruise.	Hapag-Lloyd Cruises chooses suite/cabin and deck at the beginning of the cruise.
Shore excursions	Shore excursions bookable after their publication	Shore excursions bookable after their publication	Shore excursions bookable 14 days after their publication
Cancellation fee insurance	yes (20% excess)	yes (20% excess)	–
Early booking discount	yes (depending on booking date)	yes (depending on booking date)	–
Deposit when booking	<p>20% must be paid up to 365 days prior to departure</p> <p>25% must be paid between the 364th and 181st day prior to departure</p> <p>30% must be paid from the 180th day prior to departure</p> <p>Must be paid immediately within 30 days prior to departure</p>	<p>20% must be paid up to 365 days prior to departure</p> <p>25% must be paid between the 364th and 181st day prior to departure</p> <p>30% must be paid from the 180th day prior to departure</p> <p>Must be paid immediately within 30 days prior to departure</p>	<p>40% must be paid up to 365 days prior to departure</p> <p>45% must be paid between the 364th and 181st day prior to departure</p> <p>50% must be paid from the 180th day prior to departure</p> <p>Must be paid immediately within 30 days prior to departure</p>
Combination discount	yes (depending on offer)	–	–

The included services are contained in all fares.

Further information about our fares at your travel agency or online at [www.hl-cruises.com/new-fare-structure](http://www.hl-cruises.com/new-fare-structure)

Be inspired at [www.hl-cruises.com](http://www.hl-cruises.com), Facebook and Instagram. Book now on our website, via email [service@hl-cruises.com](mailto:service@hl-cruises.com) and by phone +49 40 30703070 or at your travel agency. Hapag-Lloyd Cruises, a TUI Cruises GmbH company, Heidenkampsweg 58, 20097 Hamburg, Germany. Free phone: Belgium 0800 79421 · Netherlands 08000 220459 · United Kingdom 08000 513829 · USA 877 4457447

All prices in this brochure as of December 2024. Availability and pricing as well as services are subject to change without notice. The booking confirmation is definitive with regard to terms and prices. For more information and the Terms and Conditions of Travel, please refer to our website. The printing of this advertising material supports more sustainable forest management through the use of certified paper.